

WHELEN[®]

ENGINEERING COMPANY INC.

51 Winthrop Road
Chester, Connecticut 06412-0684
Phone: (860) 526-9504
Fax: (860) 526-4078
Internet: www.whelen.com
Sales e-mail: autosale@whelen.com
Canadian Sales e-mail: autocan@whelen.com
Customer Service e-mail: custserv@whelen.com

Installation Guide: H27HACP Halogen Lamp Assembly

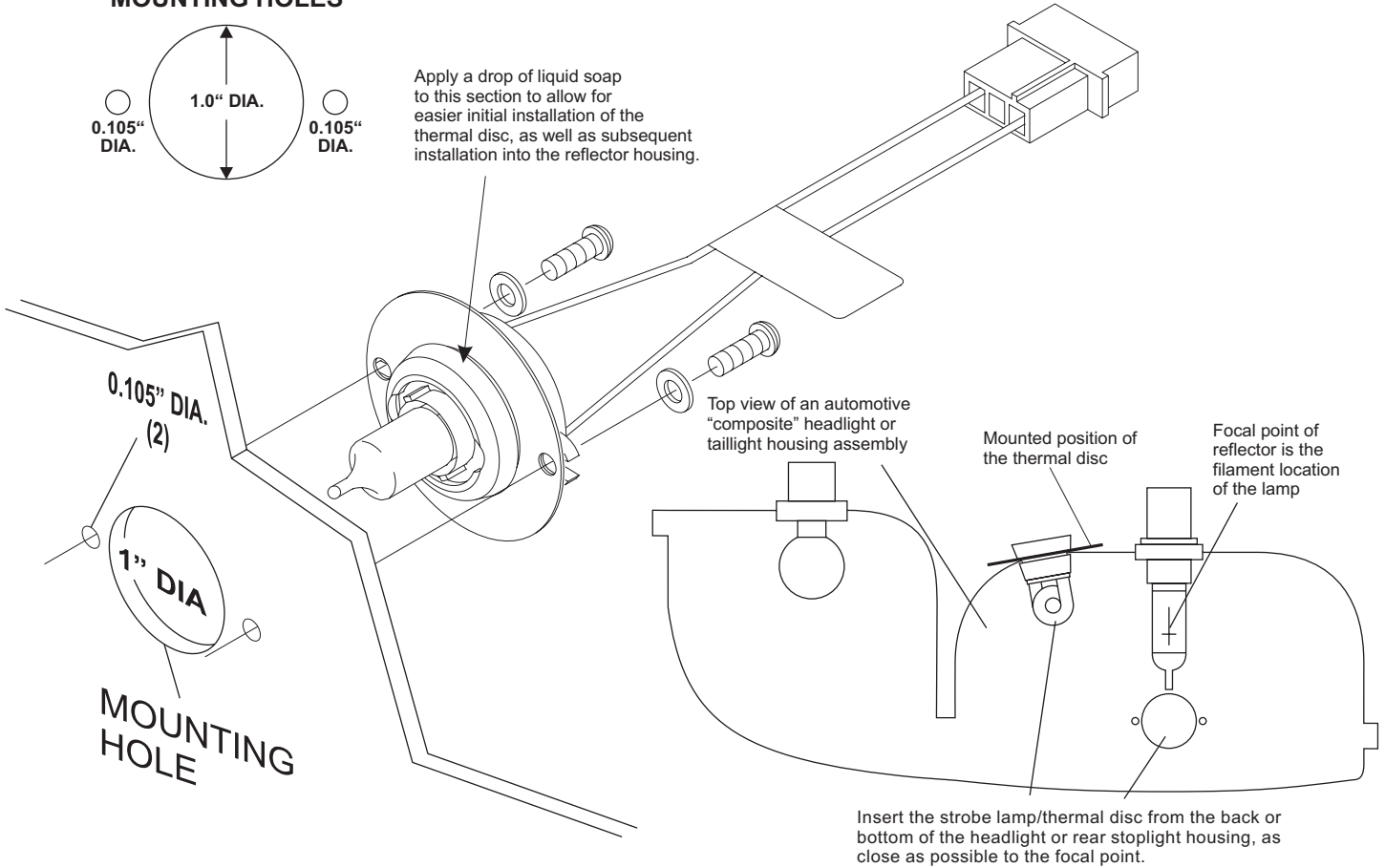
Safety First

This document provides all the necessary information to allow your Whelen product to be properly and safely installed. Before beginning the installation and/or operation of your new product, the installation technician and operator must read this manual completely. Important information is contained herein that could prevent serious injury or damage.

- **Proper installation of this product requires the installer to have a good understanding of automotive electronics, systems and procedures.**
- **If mounting this product requires drilling holes, the installer MUST be sure that no vehicle components or other vital parts could be damaged by the drilling process. Check both sides of the mounting surface before drilling begins. Also de-burr the holes and remove any metal shards or remnants. Install grommets into all wire passage holes.**
- **If this manual states that this product may be mounted with suction cups, magnets, tape or Velcro[®], clean the mounting surface with a 50/50 mix of isopropyl alcohol and water and dry thoroughly.**
- **Do not install this product or route any wires in the deployment area of your air bag. Equipment mounted or located in the air bag deployment area will damage or reduce the effectiveness of the air bag, or become a projectile that could cause serious personal injury or death. Refer to your vehicle owner's manual for the air bag deployment area. The User/Installer assumes full responsibility to determine proper mounting location, based on providing ultimate safety to all passengers inside the vehicle.**
- **For this product to operate at optimum efficiency, a good electrical connection to chassis ground must be made. The recommended procedure requires the product ground wire to be connected directly to the NEGATIVE (-) battery post.**
- **If this product uses a remote device to activate or control this product, make sure that this control is located in an area that allows both the vehicle and the control to be operated safely in any driving condition.**
- **Do not attempt to activate or control this device in a hazardous driving situation.**
- **If this product contains strobe light(s), halogen light(s) or high-intensity LEDs, do not stare directly into these lights at a close distance. Momentary blindness and/or eye damage could result.**
- **If this product contains strobe light(s), halogen light(s) or high-intensity LEDs, use only soap and water to clean the lamp lens. Use of other chemicals could result in premature lens cracking (crazing) and discoloration. Lenses in this condition have significantly reduced effectiveness and should be replaced immediately. Inspect and operate this product regularly to confirm its proper operation and mounting condition. Do not use a pressure washer to clean this product.**
- **It is recommended that these instructions be stored in a safe place and referred to when performing maintenance and/or reinstallation of this product.**
- **FAILURE TO FOLLOW THESE SAFETY PRECAUTIONS AND INSTRUCTIONS COULD RESULT IN DAMAGE TO THE PRODUCT OR VEHICLE AND/OR SERIOUS INJURY TO YOU AND YOUR PASSENGERS!**

For warranty information regarding this product, visit www.whelen.com/warranty

MOUNTING HOLES



INSTALLATION OF A HALOGEN LAMP ASS'Y INTO A COMPOSITE AUTOMOTIVE HEADLIGHT OR TAILLIGHT ASSEMBLY:

1. Select the mounting location for the lamp assembly, keeping in mind that the lamp will share the same reflector as the headlight, brake light, or signal light. Make sure that the lamp does not interfere with the proper operation of these lights (Fig. 2).
2. Remove the "Composite" reflector assembly from the vehicle. Choose a surface in the rear or bottom of the "Composite" housing which is as flat as possible. Using a hole saw, cut a 1" hole (+0.030"/-0.000" tolerance) for the lamp in the housing as shown in Fig. 1. Be sure to de-burr this hole completely. Mount the thermal disc onto the strobe light assembly with the disc holes aligned with the lamp ears as shown.
3. Using a twisting motion, insert the lamp assembly into the reflector housing until it snaps into its proper position. Do not force the lamp into position. NOTE! To aid initial installation, apply a drop of liquid soap to the outer surface of the black rubber housing.
4. Mark the location for the two mounting holes (0.105" dia.). Remove the lamp assembly and drill the holes in this area.
5. Reinstall the lamp assembly and using the hardware provided, secure the lamp to the reflector assembly as shown.

IMPORTANT NOTE: If the H27HACP is being used in an area previously occupied by an S30HA light assembly, it is important for the installation technician to seal the mounting holes used by the previous assembly with RTV or other suitable material!