

WHELEN[®]

ENGINEERING COMPANY INC.

Route 145, Winthrop Road,
Chester, Connecticut 06412
Phone: (860) 526-9504
Fax: (860) 526-2009
Internet: www.whelen.com
Sales/Service e-mail: aviation@whelen.com

Installation Guide: 90340()-series Models 9034001 - 9034008 P/N: 01-0790340-01 through -08 LED Position Light/Strobe Assembly



**TSO-C30c
TYPES I, II, III
APPROVED**

**TSO-C96a
CLASS II
APPROVED**



The conditions and tests required for TSO approval of this article are minimum performance standards. It is the responsibility of those installing this article either on or within a specific type or class of aircraft to determine that the aircraft installation conditions are within the TSO standards. TSO articles must have separate approval for installation in aircraft. The article may be installed only if performed under 14 CFR part 43 or the applicable airworthiness requirements.

POSITION LIGHT:

Operational Voltage: 14/28 VDC (nominal)

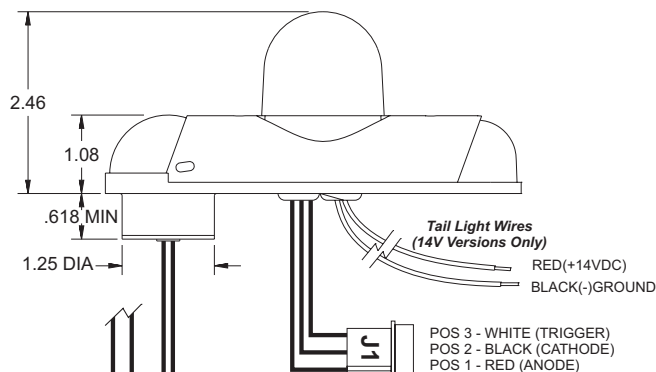
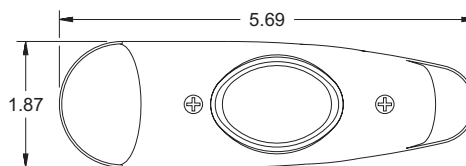
Input Current: 0.5 / 0.25 Amps

EQUIPMENT LIMITATIONS: An approved lighting system consists of two lights, one located on each wingtip. The baseplate must be mounted parallel to the vertical and horizontal centerlines of the aircraft to project the patterns properly. The strobe tube assembly must be connected to a strobe power supply, such as Whelen model 70888, 70879 or other approved models.

CONTINUED AIRWORTHINESS: The 90340 series LED wingtip position light assembly is designed with 3 forward LED's and two aft LED's. If any one LED fails, the unit must be repaired or replaced. Inspect the lens. Replace if there is excessive scratching, discoloration or cracking.

INSTALLATION PROCEDURES: The following information is to assist in the installation of a Whelen 90340 Light System.

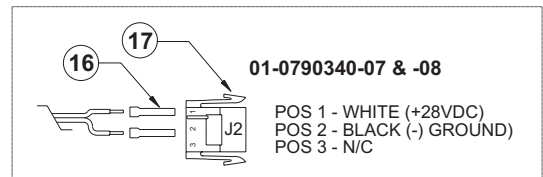
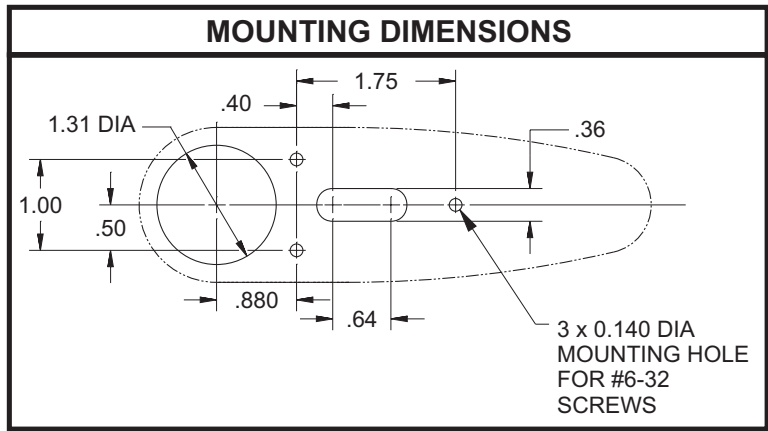
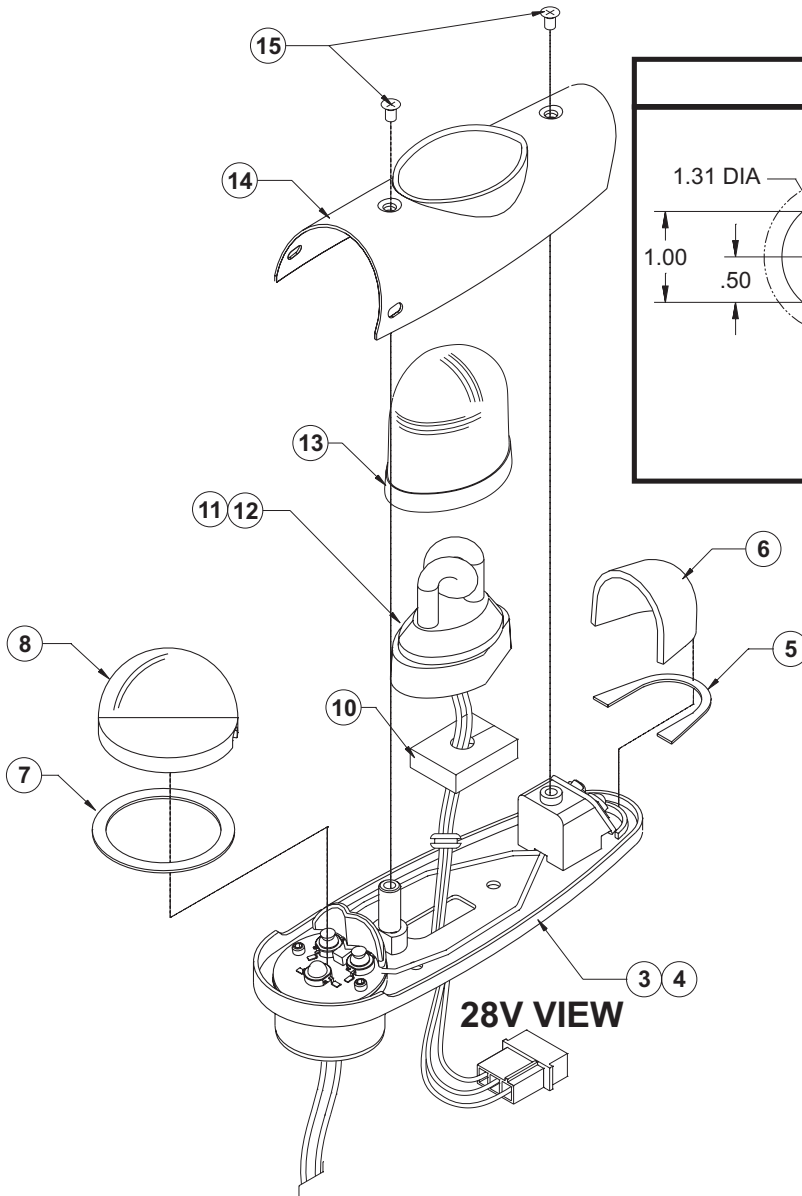
1. Choose the appropriate 90340() series replacement light assembly.
2. The installation procedure described in the following text will be confined to a single light installation, but is identical for multiple light installations.
3. Remove the old light, locate and save the existing +VDC lead and (-) ground lead. Clean and prep ends as required.
4. Make sure the existing system is equipped with an appropriate sized breaker. Connect the existing +14/28 VDC lead to the POSITIVE wire on the input cable assembly (supplied with the light assembly). Connect the existing ground lead to the GROUND wire on the input cable assembly or use the supplied connector as shown in the illustrations. Both leads must be connected by an approved FAA connection. Insure that the wire leads clear of any obstructions and ty-wrap as required. Connect the strobe, J1, to the strobe power supply as shown in the figure.



NOTE - Connector shown for 9034007 and 9034008
WHITE (+28VDC) OR RED (+14VDC)
BLACK (-) GROUND

POS 1 - WHITE (+28VDC)
POS 2 - BLACK (-) GROUND
POS 3 - N/C

5. Remove the shroud from the light assembly.
6. Position the base of the new light assembly onto the mounting surface. Insert three (3) #6-32 pan head screws into the mounting hole and tighten firmly. Reinstall the lens so that the two notches are positioned under the shroud, with each notch equidistant to the centerline.
7. Check all avionics systems for interference from the installation.
8. A flight check should be performed by a properly certified pilot.
9. Update aircraft records, complete Form 337 and obtain FAA field approval for installation, as required.



28V VIEW

14V VIEW

| QTY. | QTY. | QTY. | QTY. | QTY. | QTY. | QTY. | QTY. | QTY. | QTY. | ITEM | PART NUMBER | DESCRIPTION |
|------|------|------|------|------|------|------|------|------|------|------|---------------|--|
| | | | | | | | | | * | | 01-0790339-01 | MODEL 9034001 FINAL ASSY (14V GRN, RFI) |
| | | | | | | | | | | | 01-0790339-02 | MODEL 9034002 FINAL ASSY (14V RED, RFI) |
| | | | | | | | | | | | 01-0790339-03 | MODEL 9034003 FINAL ASSY (28V GRN, RFI) |
| | | | | | | | | | * | | 01-0790339-04 | MODEL 9034004 FINAL ASSY (28V RED, RFI) |
| | | | | | | | | | | | 01-0790339-05 | MODEL 9034005 FINAL ASSY (28V GRN, RFI) |
| | | | | | | | | | * | | 01-0790339-06 | MODEL 9034006 FINAL ASSY (28V RED, RFI) |
| | | | | | | | | | | | 01-0790339-07 | MODEL 9034007 FINAL ASSY (28V GRN, RFI) |
| | | | | | | | | | * | | 01-0790339-08 | MODEL 9034008 FINAL ASSY (28V RED, RFI) |
| - | - | - | - | - | - | - | - | - | - | 1 | 01-0290338-01 | ASS'Y, ANTICOL/ POS LT GRN (14V) |
| - | - | - | - | - | - | - | - | - | 1 | - | 01-0290338-02 | ASS'Y, ANTICOL/ POS LT RED (14V) |
| - | 1 | - | 1 | - | 1 | - | - | - | - | 3 | 01-0290338-03 | ASS'Y, ANTICOL/ POS LT GRN (28V) |
| 1 | - | 1 | - | 1 | - | - | - | - | - | 4 | 01-0290338-04 | ASS'Y, ANTICOL/ POS LT RED (28V) |
| 1 | 1 | 1 | 1 | 1 | 1 | 1 | 1 | 1 | 1 | 5 | 38-0250901-00 | GASKET, TAIL POSITION LIGHT MODEL 90340 |
| 1 | 1 | 1 | 1 | 1 | 1 | 1 | 1 | 1 | 1 | 6 | 68-3950903A30 | LENS, CLEAR TAIL POSITION LT HARDCOAT |
| 1 | 1 | 1 | 1 | 1 | 1 | 1 | 1 | 1 | 1 | 7 | 38-0230021-01 | GASKET, POSITION LIGHT SPLIT |
| 1 | 1 | 1 | 1 | 1 | 1 | 1 | 1 | 1 | 1 | 8 | 68-3950902A30 | LENS, CLEAR FWD POSITION LIGHT |
| 1 | 1 | 1 | 1 | 1 | 1 | 1 | 1 | 1 | 1 | 9 | 21-11061002-1 | GROMMET, SPLIT 3/16" ID |
| 1 | 1 | 1 | 1 | 1 | 1 | 1 | 1 | 1 | 1 | 10 | 38-0130878-01 | GASKET, FLASHTUBE, A600 (.375) |
| 1 | 1 | - | - | 1 | 1 | 1 | 1 | 1 | 1 | 11 | 36-0050626-01 | ASS'Y, FLASHTUBE 6.00" LEADS W/GROMMET |
| - | - | 1 | 1 | - | - | - | - | - | - | 12 | 36-0050626-02 | ASS'Y, FLASHTUBE 12.50" LEADS W/GROMMET |
| 1 | 1 | 1 | 1 | 1 | 1 | 1 | 1 | 1 | 1 | 13 | 68-2290005-34 | LENS, CLEAR/COATED A612 |
| 1 | 1 | 1 | 1 | 1 | 1 | 1 | 1 | 1 | 1 | 14 | 19-170049-010 | RETAINER, A600 LENS COMPLETE |
| 2 | 2 | 2 | 2 | 2 | 2 | 2 | 2 | 2 | 2 | 15 | 14-0050508-27 | SCREW, 6-32 5/16 PFHMS CSNK MS51959-27 |
| 2 | 2 | - | - | - | - | - | - | - | - | 16 | 39-0501326-04 | SOCKET, 20-14 AWG, .084 COMM MATE-N-LOK, |
| 1 | 1 | - | - | - | - | - | - | - | - | 17 | 39-0403811-04 | HOUSING, 3 POS SCKT PANEL MT |