

Several updates have been made to **Simulate**, enhancing its accessibility and efficiency while providing a smoother user experience. Key improvements include enhanced customization options, faster workflows, and better visual controls, allowing you to create and adjust configurations more accurately.

Simulate is a web-based application that lets you upload Whelen Command® WeCanX® configurations to see how they will look and sound on a vehicle. With Simulate, you can preview configurations for lightbars, lighthoods, and Core® control systems before they are connected to a vehicle.



What's New:

Open Shared Simulations from Menu Bar:

You can now open shared simulations directly from the menu bar, skipping the need to go back to the home page.

Delete Simulations Without Opening:

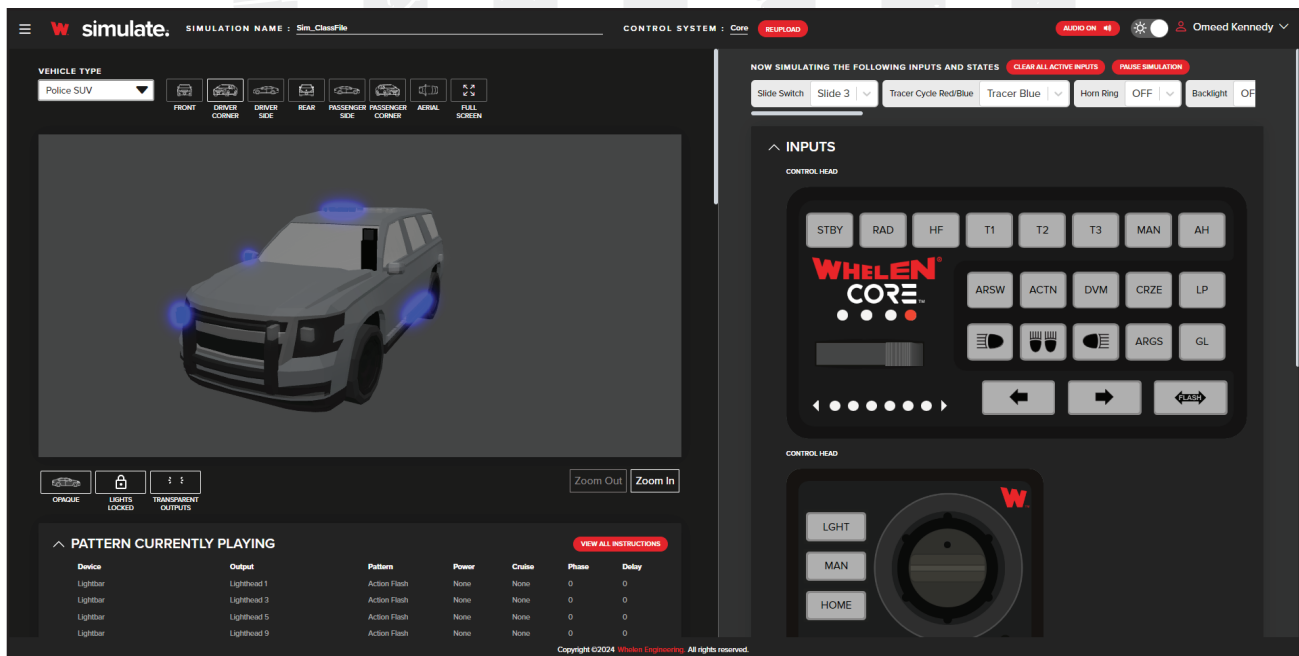
Simulations can now be deleted directly from the list, so there's no need to open them first.

Set and Change Output Colors in Simulate:

Output colors can now be adjusted directly in the Simulate app, eliminating the need to set them in Command before importing.

Dark Mode Added:

Simulate now offers a Dark Mode option for a more comfortable user experience, especially in low-light environments.



Dark Mode

Transparent Outputs for Realistic Appearance:

You can now set outputs to Transparent, providing a more accurate visual representation of their appearance on an actual vehicle.

Tooltips for Outputs and Devices:

Hovering over outputs and devices will now display a tooltip with the device's name, making it easier to identify.

Right-Click Output Controls:

You can right-click on outputs in the vehicle model to adjust their color, reset their position, or delete them entirely.

More Snap Points for Outputs and Lightbars:

We have added more snap points, to provide greater flexibility for positioning outputs and lightbars.

Support for Ignition Sense and Vehicle Safety Gateway® Inputs:

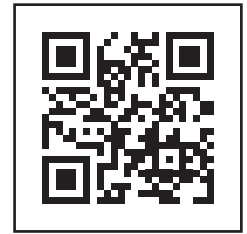
Simulate now includes Ignition Sense and Vehicle Safety Gateway inputs for more accurate and detailed simulations.

Text Highlighting in Instruction Viewer:

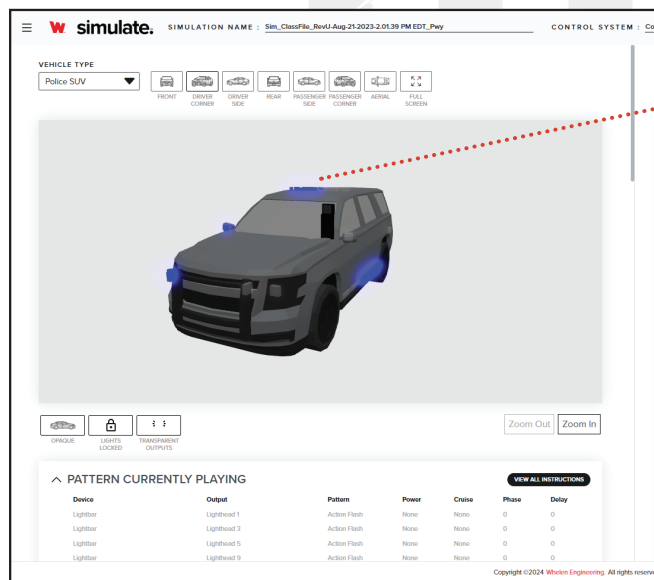
When searching within the Instruction Viewer, the searched text will now be highlighted for quicker identification.

Zoom In and Out for Easier Placement:

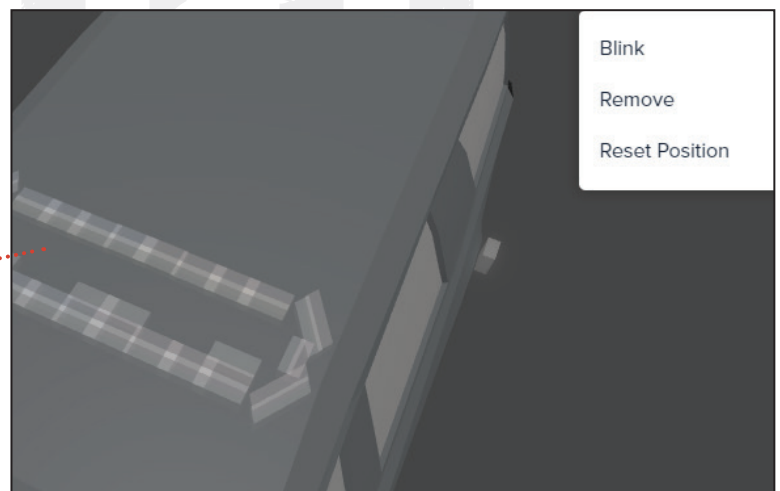
New zoom functionality enables you to easily zoom in and out of the vehicle model for precise placement of outputs.



Scan the QR code
or click [HERE](#)
to experience the
new Simulate



Light Mode



Close-Up View with New Zoom In/Out Functionality