



THE  
WHELEN  
CLOUD  
PLATFORM®



# THE WHELEN CLOUD PLATFORM<sup>®</sup>

---

## Setting the Standard in Emergency Scene Safety

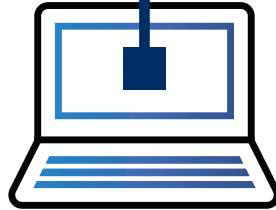
Elevate your emergency response with the Whelen Cloud Platform – a state-of-the-art, cloud-based solution that brings total control to your fleet and safety to every scene. Designed for first responders and fleet managers, WCP<sup>®</sup> provides real-time connectivity across vehicles and agencies, ensuring a unified response when every second matters.

With WCP, experience full oversight and control of your fleet in real time. From instant digital alerts to geofence-controlled technology and traffic preemption, our safety features are designed to mitigate risks for first responders and other motorists while reducing response times. Remotely update vehicle settings, track precise vehicle locations, and manage firmware updates with ease using secure data access from any device, anytime, anywhere.

With the Whelen Cloud Platform, you're equipped with the ultimate fleet management solution, enabling seamless coordination and advanced automation so you can respond with precision and confidence in any situation.

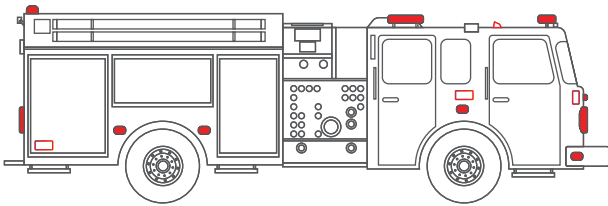
**EFFORTLESS  
INTEGRATION,  
ENHANCED  
SAFETY**

**WITH ANY  
DEVICE**



The Whelen Cloud Platform<sup>®</sup> connects with any device or system to form a larger safety solution. Built to adapt to your unique needs, WCP<sup>®</sup> seamlessly integrates your fleet's technology into a powerful network that prioritizes safety and efficiency. No matter the setup, WCP keeps your fleet ready for any challenge, focused on the goal that matters most: protecting the people you serve.

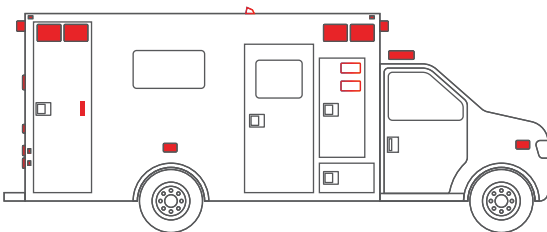
**COMPATIBLE WITH  
ANY VEHICLE,  
ANY LIGHTING SYSTEM,  
ANY FLEET.**



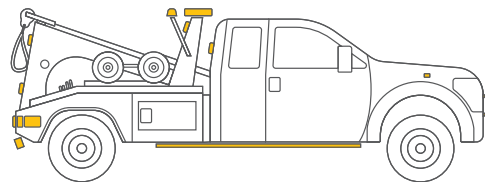
Fire Apparatus



Law Enforcement



EMS



Commercial/DOT/Utility Trucks

# ENHANCING INTERSECTION

# SAFETY WITH TRAFFIC PREEMPTION

Through partnerships with leaders in traffic management technology, our traffic preemption solutions empower first responders with the ability to request green lights at intersections. This capability reduces response times, improves intersection safety, and clears the way for emergency vehicles. Preemption requests ensure that first responders navigate traffic more safely and efficiently, helping protect both motorists and emergency personnel on the road.



Traffic preemption technology grants first responders the power to request green lights, enhancing intersection safety and response times.

## BUILDING A STRONGER PLATFORM THROUGH PARTNERSHIPS

Our commitment to protect first responders drives us to partner with other industry leaders who also prioritize safety, reliability, and innovation. By collaborating with top companies across various fields, we're able to expand the capabilities of the Whelen Cloud Platform®, integrating advanced tools and technologies that meet the evolving needs of first responders. Each partnership strengthens our platform, ensuring we can offer the most comprehensive, effective solutions to keep teams connected and communities protected.



## OUR TRUSTED PARTNERS



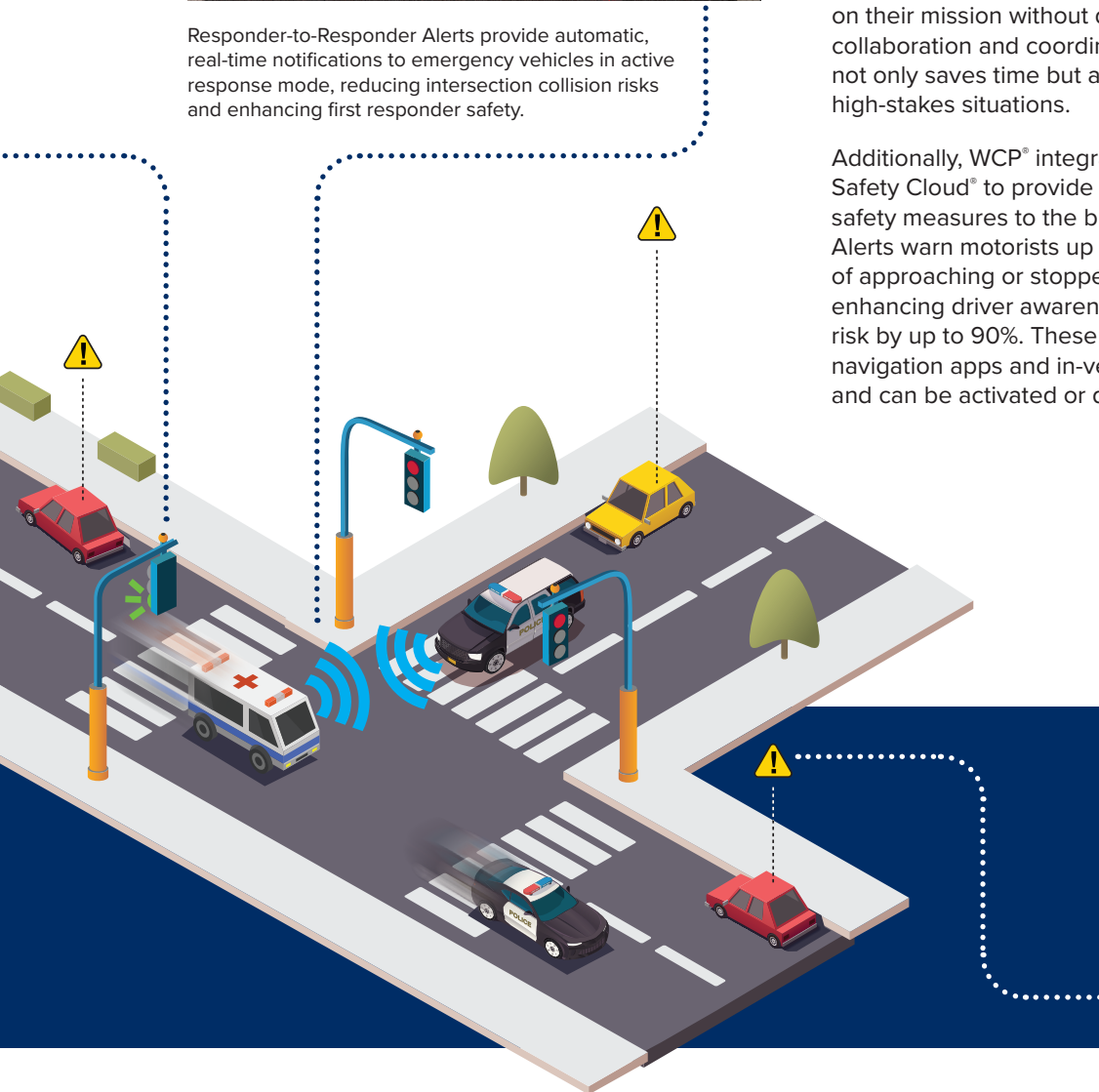
# PROACTIVE PROTECTION ON THE ROAD WITH RESPONDER-TO-RESPONDER ALERTS



Responder-to-Responder Alerts provide automatic, real-time notifications to emergency vehicles in active response mode, reducing intersection collision risks and enhancing first responder safety.

Responder-to-Responder (R2R) Alerts revolutionize emergency response safety by enabling real-time communication between vehicles in active response mode. When multiple responders are en route to a scene, R2R Alerts automatically detect and notify them as they approach the same intersections, significantly reducing the risk of collisions. This proactive safety measure enhances situational awareness for all emergency personnel, ensuring every first responder arrives safely. R2R Alerts operate seamlessly in the background, requiring no manual activation, allowing responders to focus on their mission without distraction. By prioritizing collaboration and coordination, this technology not only saves time but also protects lives in high-stakes situations.

Additionally, WCP® integrates with HAAS Alert's Safety Cloud® to provide Digital Alerts, which extend safety measures to the broader public. Digital Alerts warn motorists up to 30 seconds in advance of approaching or stopped emergency vehicles, enhancing driver awareness and reducing collision risk by up to 90%. These alerts are delivered via navigation apps and in-vehicle infotainment systems and can be activated or deactivated as needed.



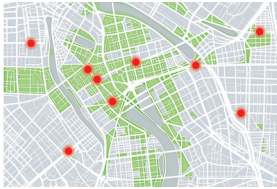
Safety Cloud delivers digital alerts that notify motorists of approaching or upcoming emergency response vehicles.



# WHY WCP<sup>®</sup>



## FLEET MANAGEMENT SIMPLIFIED



### LIVE MAP

Gain real-time insights with the Whelen Cloud Platform<sup>®</sup> Live Map, giving you precise vehicle locations for faster responses and heightened situational awareness.



### ANALYTICS & REPORTING

Effortlessly store, analyze, and visualize fleet data. Generate custom reports with key stats like vehicle status, travel heatmaps, speed, and location to keep your team informed.



### MAINTENANCE

Stay on top of essential vehicle data, from service schedules to fuel levels. With detailed insights for 2019-2025 Ford, GM, and Stelantis vehicles, maintenance decisions have never been easier.

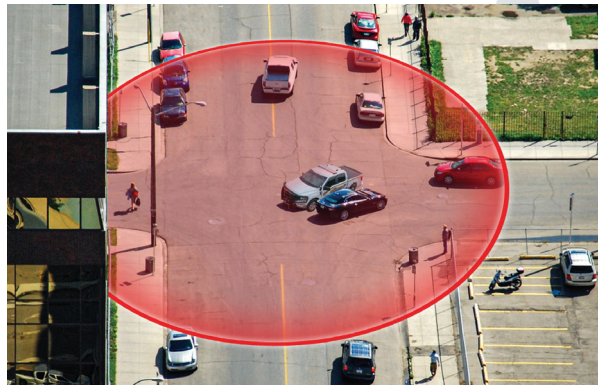




# AUTOMATED SAFETY SOLUTIONS

## GEOFENCE CONTROLLED TECH

Automatically activate safety functions based on location, like adjusting flash patterns at dangerous intersections or reducing sirens near schools and hospitals – keeping responders and motorists safer.



## PLATFORM ALERTS

Set custom alerts to notify teams of custom events, from vehicle maintenance reminders to K9 deployments and overheat alerts, ensuring your team stays informed and ready.



## DIGITAL ALERTS

Provide motorists with real-time alerts of nearby emergency vehicles, increasing their awareness and reducing collision risk by up to 90%.





## STREAMLINED EQUIPMENT MANAGEMENT



### FIRMWARE & CONFIGURATION OTA

Push firmware updates fleet-wide over the air and receive instant notifications. Manage all configurations in one central library.



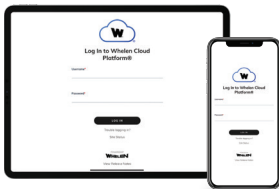
### FLEET VEHICLE REGISTRY

Easily add, modify, view, and organize all vehicles from a user-friendly dashboard, keeping fleet details at your fingertips.



### WHELEN DEVICE REGISTRY

Keep a complete, organized list of all installed devices for efficient tracking and maintenance.



### MOBILE READY

Quickly register hardware and fleet vehicles right from your smartphone or tablet, ensuring your fleet is always connected.



### USER ACCOUNTS

Create and manage multiple user profiles, with customizable roles and access for streamlined team management.



### DEVICE LOCK

Prevent unauthorized changes by locking configuration and firmware updates on individual vehicles or your entire fleet with a simple workflow.







We're Always Adding  
New Features!

Visit [whelen.com/cloud](http://whelen.com/cloud)  
to learn more.



# WHAT'S NEXT FOR WCP®

We're committed to delivering the most effective, reliable tools and technology that will keep you safe and prepared for any challenge. We're continuously enhancing the Whelen Cloud Platform® by expanding its capabilities and improving its functionality to support your critical missions.



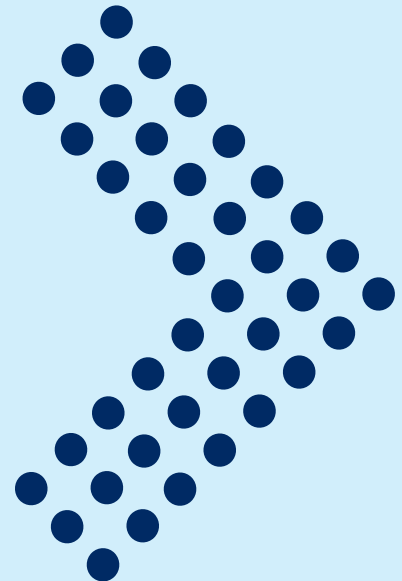
## FLEET SNAPSHOT

Easily access specific dates and times for a detailed snapshot of your fleet's locations on a map, providing enhanced oversight and control over fleet operations.



## FLEET MANAGEMENT API

Connect the Whelen Cloud Platform® with your agency's asset management system for automatic, seamless synchronization of vehicle information across platforms.



# THE CORE<sup>®</sup> ADVANTAGE

## FEATURES COMPARISON

Whelen Core enhances the power of the Whelen Cloud Platform<sup>®</sup> by seamlessly integrating vehicle control with advanced connectivity. This integration streamlines fleet operations, improves situational awareness, and allows for enhanced real-time system updates and diagnostics. With Core, responders benefit from faster communication, optimized coordination, and the ability to adapt quickly to changing scenarios, ensuring exceptional performance in every response.

### WITHOUT

- Live Map with “Responding” Indicators
- Configurable Input Flags
- Fleet Vehicle Registry
- Over-the-Air (OTA) Firmware Updates for VSG<sup>®</sup>
- Traffic Preemption
- Fleet Analytics Dashboard
- Activity Logs and Playback
- Heatmaps
- Digital Alerts via HAAS Alert Safety Cloud<sup>®</sup>
- Vehicle Maintenance
- Real-Time Text and Email Notifications

### WITH

- **Whelen Device Registry**
- **OTA Firmware Updates for Core and Peripherals**
- **OTA Core Configurations**
- **Device Lock**
- **Geofence Controlled Tech**
- **Responder-to-Responder Alerts via HAAS Alert Safety Cloud<sup>®</sup>**
- Live Map with “Responding” Indicators
- Configurable Input Flags
- Fleet Vehicle Registry
- Over-the-Air (OTA) Firmware Updates for VSG<sup>®</sup>
- Traffic Preemption
- Fleet Analytics Dashboard
- Activity Logs and Playback
- Heatmaps
- Digital Alerts via HAAS Alert Safety Cloud<sup>®</sup>
- Vehicle Maintenance
- Real-Time Text and Email Notifications

## ENGINEERED FOR EVERY FLEET

Our Core control systems are designed to meet the unique demands of any fleet. From compact vehicles with limited space to large-scale operations requiring advanced automation, Core offers scalable solutions that provide precision, reliability, and seamless integration.



CENCOM  
**CORE**



**CORE-S**



**CORE-R**



Learn more about our  
Core Control Systems  
by visiting us at  
[whelen.com/core](http://whelen.com/core)

# NEXT-LEVEL SECURITY FOR YOUR DATA

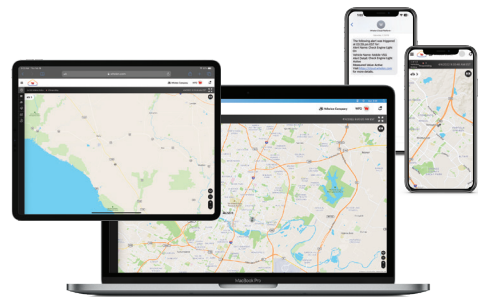


Your data's safety is our top priority. The Whelen Cloud Platform® is engineered with cutting-edge security to ensure your information—vehicle registries, real-time Live Map data, and configuration libraries—is protected every step of the way. We leverage Amazon Web Services (AWS) infrastructure for unmatched reliability, layering in our strict, industry-leading security policies.

And our commitment goes even further: an independent third-party security audit and verification of our full network, from cloud to device, underscore our dedication to safeguarding your data. With security embedded directly into the VSG® hardware, Whelen delivers a fortified IoT environment you can trust.

# EFFORTLESS FLEET MANAGEMENT AT YOUR FINGERTIPS

With the Whelen Cloud Platform, you're always in control. Access and manage your fleet and registries seamlessly from your computer, smartphone, or tablet for real-time oversight and flexibility on the go. Stay connected and responsive, no matter where you are.



# SEAMLESS CONNECTIVITY FOR YOUR FLEET

## THE VEHICLE SAFETY GATEWAY®

Compact yet powerful, the Vehicle Safety Gateway® (VSG®) connects your fleet to the Whelen Cloud Platform with seamless, over-the-air communication. Equipped with its own SIM card and a discreet, low-profile antenna, the VSG enables real-time updates and remote management of your Core® and WeCanX® devices. For qualifying users, Verizon Frontline support adds another layer of connectivity and reliability, ensuring your fleet stays mission-ready.



Vehicle Safety Gateway®

## VSG SPECS

- GPS location (integrated within the cellular modem)
- CenCom Core system inputs (via ethernet)
- 8 logic inputs
- OBD2 port
- 7.1" L x 4.6" W x 1.1" D



Exterior Antenna

## ANTENNA SPECS

- Aerodynamic design (exterior)
- Low-loss, high-quality cables from the antenna to the VSG provide a strong signal
- IP67 rated (exterior)
- Exterior antenna: 7.08" L x 2.76" W x 2.41" D
- Interior antenna: 7.01" L x 2.36" W x 0.75" D



Interior Antenna



## Whelen Cloud Platform<sup>®</sup>

For more information  
or to schedule a quick call  
or demo with a Whelen  
sales representative,  
visit [whelen.com/cloud](http://whelen.com/cloud) or  
scan the QR code below.



**WHELEN<sup>®</sup>**  
ENGINEERING COMPANY INC.

@WhelenENG



Whelen Engineering Company  
(860) 526-9504  
[www.whelen.com](http://www.whelen.com)

Whelen Engineering reserves the  
right to upgrade and improve  
products without notice.

© 2025 Whelen Engineering Company,  
Inc. Printed in U.S.A.  
Code No. B13358P - 01/25

All products proudly designed,  
manufactured, and assembled in the U.S.A.  
• ISO 9001 Registered QMS